

2026 DATA SHEET

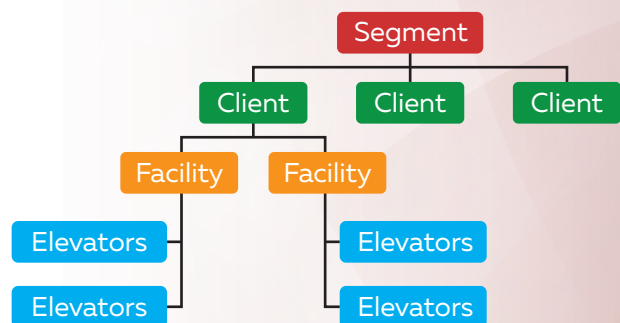
FMPPro™ is a SaaS for Building Management suite supporting specialized asset modules. The Elevator Systems Asset module is a comprehensive platform for building managers and Elevator equipment service providers. The VTPro™ design is ideal for contracted assessment, periodic reinspection, and organizational capital planning. It is designed with permission based sharing between building owners, Elevator consultants, and contractors. The design provides Web-accessible observation data for reporting and analytics.

General Program

- Annual SaaS subscription
- WEB Accessible to thin clients
- Screen Views- Desktop & Mobile tablets
- Permission based – By User Role
- Customize Data Entry Preferences

Data Grouping

- Segments – (user defined)
- Clients – (user defined)
- Facilities
- VT Equipment installations



Program Tools

- User Admin
- Company Preferences
- Data Preferences
- GIS Mapping Preferences
- Access role & User premissions
- Document Management

Data Entry

- Copy Facilities
- Copy Asset Details
- Auto fill System Pages
- Smart Text™ - Library

Analytics

- Company Dashboard
- Facility Dashboard
- FACI Worksheet

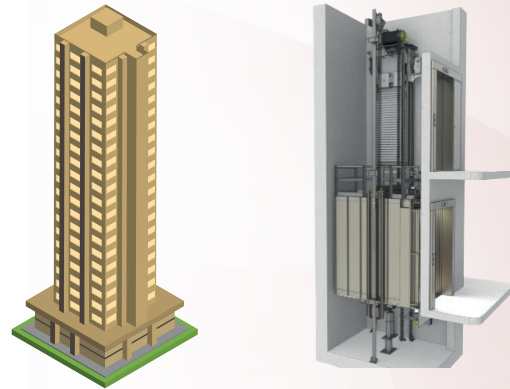
Facility Information

- Building Type
- Building Location
- GIS Mapping- Google Maps™
- Building Use
- Planned Service Life
- Existing Construction
- Structural Frame
- Service Life Remaining



Equipment Summary – Elevator- Escalator

GIS Mapping – Google Maps™
Condition Index Rating (VTCL)
Equipment System Installation
System Defects
Service Calls
Inspections
Surveys
Recommendations
Warranties
Work History



Data Standards – Elevator - Escalator Equipment Groups and Types use CSI Master Format®
Equipment Installation - Linking to structural frame type and floor elevation, service area.
Equipment Systems – Equipment installations support electrical, door and components.
Service Call Tracking – Supports listing service calls, location, types, and priorities.
Defect Types – Defects descriptions support individual Elevator – Escalator type preferences.
Inspections - List by inspector, condition with defect observation tracking.

Comprehensive Reporting Options

Reporting



Template Reports

A consultant level reporting template with optional:

- Cover Pages, Cover Letter, Table of contents, Facility Summary
- Summary of Elevator installations, detailed system components
- Image(s) selection of sizes and locations
- Attachment of PDF documents



Master Budget and Inventory

A comprehensive master listing of Elevator installations by cost center
Buildings List, Elevators, equipment summaries, condition, replacement
Planning and financial forecasts.



Financial and Forecasting

Financial forecasts with sorting options, 5-20 years.
Exports, Filtering with column sorting tools.



Facility and Elevator Details

Page-level reporting with export, Excel, and PDF formats.
Facility Information with Elevator Inventory Exports.
Elevator equipment exports with detailed information.
Equipment installations with detailed reporting options.