

## 2026 DATA SHEET

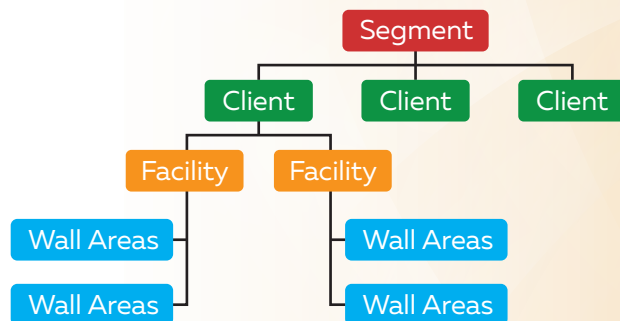
FMPro™ is a SaaS for Building Management suite supporting specialized asset modules. The Wall Systems Asset module is a comprehensive platform for building managers and Façade-Fenestration service providers. The WallPro™ design is ideal for contracted assessment, periodic reinspection, and organizational capital planning. Designed with permission-based sharing between building owners, Building Enclosure consultants, and contractors. The design provides Web-accessible observation data for reporting and analytics.

### General Program

- Annual SaaS subscription
- WEB Accessible to thin clients
- Screen Views- Desktop & Mobile tablets
- Permission based – By User Role
- Customize Data Entry Preferences

### Data Grouping

- Segments – (user defined)
- Clients – (user defined)
- Facilities
- Wall Sections



### Program Tools

- User Admin
- Company Preferences
- Data Preferences
- GIS Mapping Preferences
- Access role & User permissions
- Document Management

### Data Entry

- Copy Facilities
- Copy Asset Details
- Auto fill System Pages
- Smart Text™ - Library

### Analytics

- Company Dashboard
- Facility Dashboard
- FACI Worksheet

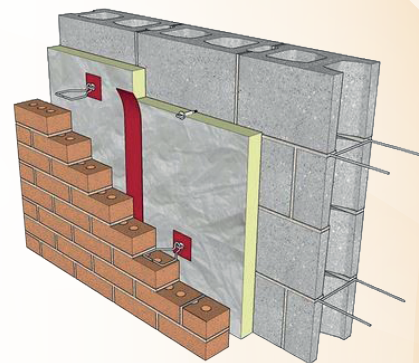
### Facility Information

- Building Type
- Building Location
- GIS Mapping- Google Maps™
- Building Use
- Planned Service Life
- Existing Construction
- Structural Frame
- Service Life Remaining



## Wall Asset Module

Wall Summary	Control Joints
GIS Data Pins – Google Maps™	Sealants
Wall Condition Index Rating (WCI)	Defects
Wall System Construction	Inspections
Window Inventory	Surveys
Door Inventory	Recommendations
Openings Inventory	Warranties
Architectural Details	Work History



**Data Standards** – Wall Systems Groups and Types use CSI Master Format®

**Wall Sections** – Link to Facility-age, structural frame type and floor elevation.

**Wall Systems** – Wall assemblies list component thickness, R & U values.

**Fenestration** – Fenestration areas support thickness, sizes and thermal properties

**Defect Types** – Defects descriptions support individual Wall-Fenestration Type preferences.

**Sealants** – Auto calculation tool for ~ sealant volume per fenestration detail.

**Inspections** – List by inspector, condition with defect observation tracking.

## Comprehensive Reporting Options

### Reporting



#### Template Reports

A consultant level reporting template with optional:

- Cover Pages, Cover Letter, Table of contents, Facility Summary
- Summary of Wall Areas, detailed Wall system assemblies
- Image(s) selection of sizes and locations
- Attachment of PDF documents



#### Master Budget and Inventory

A comprehensive master listing of Wall areas by cost center.

Listing buildings, Wall area summaries, condition, replacement.

Planning and financial forecasts.



#### Financial and Forecasting

Financial forecasts with sorting options, 5-20 years.

Exports, Filtering with column sorting tools.



#### Facility and Wall Area Details

Page-level reporting with export, Excel, and PDF formats.

Facility Information with Wall Inventory Exports.

Wall system exports with detailed information.

Fenestration with detailed reporting options.